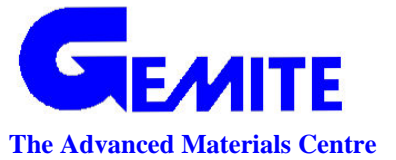


# PROJECT PROFILE



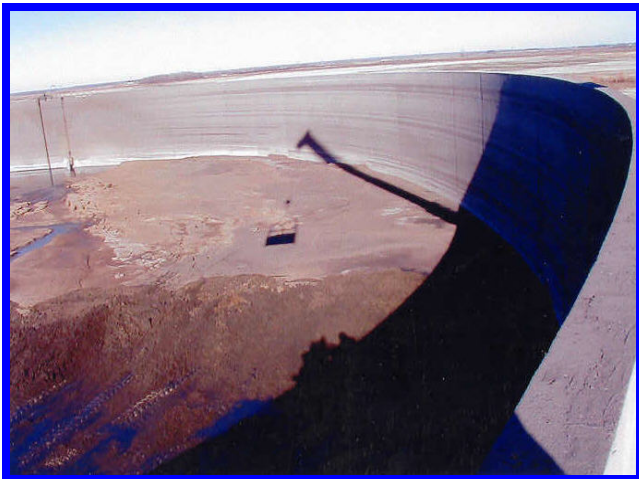
**Project:** Waterproofing of concrete storage tanks for manure, near Winnipeg, Manitoba, Canada

**Designer and Owner:** Maple Leaf Canada

**Contractor:** Construction Specialities, Winnipeg, Manitoba

**Gemite product:** **Cem-Kote Flex CR**

**Objective:** to waterproof and chemically protect manure storage tanks of a large hog farm facility. **Cem-Kote Flex CR**, a flexible polymer cement composite, was selected mainly for its ability to span cracks as well as its high chemical resistance to manure acid environment, economy and ease of application. **Cem-Kote Flex CR** has been sprayed and brushed applied in two coats to form a protective waterproofing membrane.



For further information, please contact Gemite Products Inc.  
1787 Drew Road, Mississauga, Ontario, Canada, L5S 1J5,  
Phone (905) 672-2020, Fax (905) 672-6780 or  
160-3840 East Robinson Road,  
Amherst, New York, 14228, USA,  
Toll Free (888) 443-6483, Fax (888) 443-6329  
[www.gemite.com](http://www.gemite.com)  
techinfo@gemite.com